



## Michael Corteyn – Academic Relations Manager





# Sustaining Infrastructure

Bentley's Solutions

• MicroStation • ProjectWise • AssetWise • Navigator



# Bentley Systems Benutzer



# Academic Weltweit

- Über 1.500 Universitäten Lehre mit Bentley-Technologie
- Schulen gehören zu den renommiertesten Universitäten
- Produkte und Support in den meisten Sprachen



# Academic Menu

## 2D&3D CAD Design & Modeling

- MicroStation CONNECT, MicroStation PowerDraft

## Architecture

- AECOsim Building Designer, GenerativeComponents, Bentley Navigator, promise\*e Professional, AECOsim Energy Simulator, Hevacomp Mechanical Designer, Hevacomp Electrical Designer, Hevacomp Simulator

## 3D Imagery, Mapping, Geotechnical

- Bentley Descartes, Bentley Map Enterprise, gINT Professional, Bentley Pointools, **ContextCapture**, **LumenRT**

## Transportation

- Power InRoads, Power GEOPAK, Bentley PowerCivil for Country, Bentley PowerSurvey, LEAP Bridge Enterprise, Bentley Rail Track, Power Rail Track, Power Rail Overhead Line, RM Bridge Advanced

## Structural

- STAAD.Pro, STAAD Foundation Advanced, RAM Structural Systems (steel and concrete), RAM Elements, RAM Concept, RAM Connection, ProStructures, Bentley Rebar, Bentley Power Rebar

# Academic Menu

## Hydraulics & Hydrology

- WaterGEMS, WaterCAD, SewerGEMS, SewerCAD, HAMMER, CivilStorm, StormCAD, PondPack, CulvertMaster, FlowMaster

## Offshore & Naval

- MAXSURF Enterprise, SACS Marine Enterprise, SACS Offshore Structural Enterprise, MOSES Advanced

## Plant Design & Operation

- Bentley OpenPlant Modeler, Bentley OpenPlant Power PID, Bentley OpenPlant Isometrics Manager, AutoPLANT Modeler, AutoPLANT P&ID, Bentley AutoPIPE

## Mining

- MineCycle Designer, MineCycle Survey, MineCycle Material Handling

# Pädagogen, Studenten, und Benutzer nützend:

Pädagogen	Studenten	Bentley-Anwender:
Zeit, um disziplinarische Kenntnis zu unterrichten	Vorbereitung für die Klasse im Voraus	Rekrutieren höhere Qualitätsbegabung
Lernpfade für Ihre Schüler die Technologie zu ihrem Tempo lernen	Verbringen Sie weniger Zeit für bestimmte Aufgaben	Weinigere Vermittlungskosten
Verstärken Sie Klassenzimmer-Theorien durch praktische Anwendung	Keine zusätzliche Investition in teure Schulmaterialien	Pflegebeziehungen unter Unparteiischen in technischer Ausbildung
Begeistern und Inspirieren Sie Ihre Studenten	Bessere Arbeit für bessere Noten	Mehr lebensfähig, selbstbewusst Kandidaten
Entwickeln Absolventen, die bereit sind für eine Karriere	Gewordene kostengünstigere Kandidaten für eine Karriere	Produktiver und gebrauchsfertige Neueinstellungen
Geld sparen	Showcase Funktionen mit Projektportfolios	Neue Mitarbeiter die mit der Industrie-Software vertraut sind
	ESammeln Sie Erfahrung mit der Industrie und werden Sie gut gerundet	



# Bentley Akademische Programme

## Pädagogen



### Academic SELECT:

- Zugang Zu 50 + Software-Anwendungen durch AECO Disziplinen, für Gebrauch in Klassenzimmern und Labors
- Persönliche Abonnemente für Fakultät, die Live und On-Demand (Auf Verlangen) Schulungen einschließen
- STUDENTserver ermöglicht Ihren Studenten fortzusetzen, außerhalb des Klassenzimmers – mit freiem Zugang zu Software und Schulungen zu lernen

## Studenten



### Academic SELECT:

STUDENTserver, Der freien Nutzen der Schule Academic SELECT Abonnement umfasst:

- Zugang Zu 50+ Software-Anwendungen, für die Verwendung auf persönliche Maschinen
- freie Persönliche Abos für Studenten, um On-Demand-Schulung, wo jeder Zugriff, jederzeit!
- Zugang zu Lehrabschriften, um an Pädagogen und zukünftige Arbeitgeber zu senden

## Bentley-Anwender



### Adopt-a-School:

- Rekrutieren Absolventen, die mit den entsprechenden technischen Fähigkeiten vorbereitet werden
- Pflegebeziehungen unter Unparteiischen in technischer Ausbildung





## Bedeutende neue Funktionen:

- Functional Components
- Dokumentationszentrum
- Streamlined User Experience
- Reality Modeling

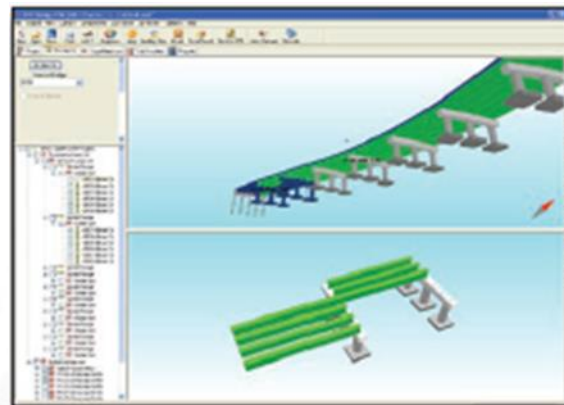
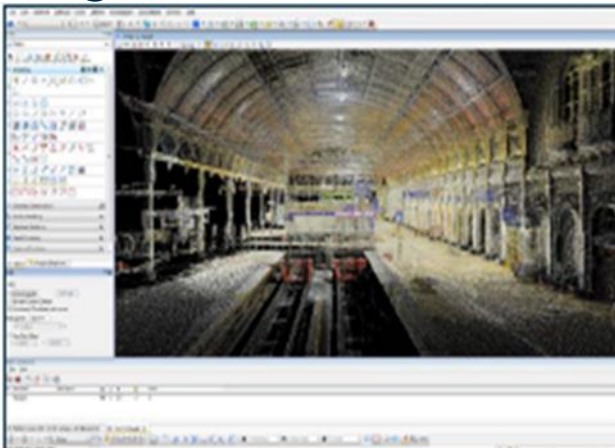


**MicroStation®**  
CONNECT Edition



**Navigator®**  
CONNECT Edition

Mehrere Anwendungen, mehrere Dienste, Websites, Berührungspunkte, der Zugriff -> konsistente Erfahrung



# MicroStation Connect Edition Produkt Informationen



## Welcome to the CONNECT Edition

With MicroStation, you can confidently model, document and visualize projects of any size. In addition to being the best 3D modeling software for engineering and architectural projects of any size and complexity, MicroStation provides all the benefits of traditional CAD software. You can produce detailed drawings and documentation, renderings and animations. Unlike simple CAD design software, MicroStation's power and flexibility helps you focus your time and energy on developing better designs, faster. You can:

- Enjoy the freedom to model nearly any 2D or 3D form imaginable.
- Clearly and effortlessly document your designs with polished 2D drawings, schedules, and reports.
- Communicate your design intent with lifelike renderings and animations.
- Take your models further by producing intelligent 3D PDFs and 3D printed prototypes.
- Seamlessly bring together project information and teams by using and sharing drawings and models from any discipline or format, including point clouds, DWG, DGN, DXF, SHP, 3DM, and more.

The CONNECT Edition introduces several key new capabilities.

### Functional Components and Parametric Modeling Enhancements

<b>Persistent constraints</b>	Increase the range of things which can be made parametric with rich, persistent and flexible 2D constraints which can also be used to create 3D model content
<b>Functional components</b>	Create flexible model content that is preconfigured with a range of variants, including embedded properties, links, and documents to speed creation and re-use.
<b>Integration with ProjectWise Catalog Services</b>	Conveniently share and access information-rich model content including components from a wide range of manufacturers and standards bodies, and your own project-specific content.

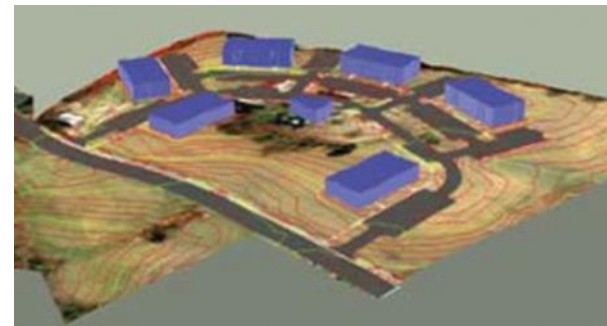
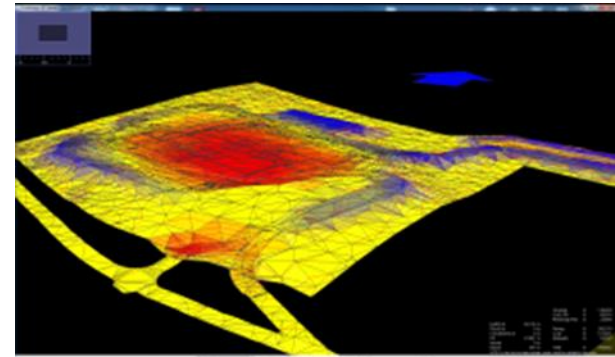
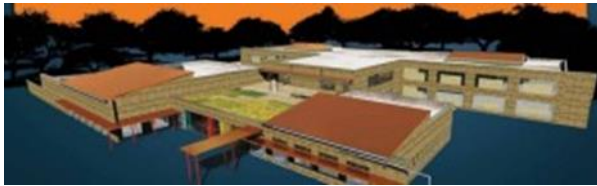
### Documentation Center

<b>Simplified sheet indexing</b>	Use a central location to index sheets and control the number, order and properties of sheets to make publishing of deliverables easier.
<b>Accelerated sheet creation and layout</b>	Employ a common approach to sheet layout and creation to enable teams to consistently build drawings and facilitate higher quality sheet sets.
<b>Property driven display rules</b>	Simplify and streamline the control of the appearance of drawing objects based drawing standards and object properties for consistent and repeatable publishing of deliverables.
<b>Property driven reports</b>	Display tabular information on drawings, populated automatically from object properties.
<b>Property driven annotation</b>	Place notes, labels and leadered text on drawings that are defined and kept up-to-date with the design as it progresses.



# Neue produkte

## SITEOPS – Lumenrt -ContextCapture



# Lumenrt

Über Akquisition erworben

E-on ist ein führendes Unternehmen in der Groß Landschafts- und Umwelt Landschaft Rendering

- Defacto-Standard in der Film- und Unterhaltungsgeschäft
- Hunderter der Blockbuster-Filme zu seinem Kredit (zB Avatar, Indiana Jones, Terminator)
- Pioneered real-time GeoDesign Visualisierung





# Lumenrt



- Real-time, filmische Qualität Rendering
- Patentierte Beleuchtungs / shadow Technologien
- IES Punkt und Spot-Lichter
- Tag und Nacht Szenen





- Riesige Bibliothek von animationen Inhalten
- Erstellen von Massen mit einem einzigen Pinselstrich
- Mit Fahrzeuge, Möbel, benutzerdefinierte Objekte
- Erstellen von benutzerdefinierten Animationspfade





- Breeze animierte Pflanzen mit Saisonalität
- Volumetric atmospherics mit Wolken und Dunst
- Dynamische Wasser mit Wellen und Schaumgummi
- Modellierbares Terrains und Felsen





- Voll ausgestattet mit allen Bentley MS-Anwendungen integriert
- Microstation und VISSIM Verkehrs Animation
- Sectioning and layers
- Funktioniert auch mit Sketchup, Revit, ArchiCAD und Cityengine





- Erstellen Sie High-Definition-Bildern und Videos mit Leichtigkeit
- Fügen Sie benutzerdefinierte Logos, Audio- und Video-Clips
- Publizieren Sie LumenRT LiveCubes um mit Kunden und Kollegen zu teilen





# Lumenrt – Product Informationen



## Key Features



### Light



**Patented Light Technologies** The LumenRT DIVE™ platform accurately renders the interaction between natural day and night light with rich atmospheric volume.

**IES Point and Spot Lights** Includes point and spot lights that are fully adjustable with IES lighting profiles.

**Accurate Reflections** Efficient rendering of both extremely bright and dark areas without loss of detail.

**Real-time Global Illumination** Creates natural ambient shadows for all objects in your scene.

**Light Groups** Organized your lights into groups for easy on/off and automatic toggle settings.

**Anti-aliasing and Motion Blur** The use of high-performance anti-aliasing and motion blur creates images of exceptional clarity and realism.

**Advanced Material Rendering** LumenRT's material engine enables advanced options such as bump maps, specular highlights, reflections and transparency control.

**Moving Vehicles** Cars trucks and buses, available as both stationary and moving, help add more life and reality to your scenes.

**EcoPainter** Paint collections of any object type such as trees, vehicles and characters with simple brush strokes to quickly create large populations.

**Plant Factory Integration** Create your own custom plants and import them into LumenRT.

**Photo-realistic Skies** LumenRT with Vue technology is able to generate high resolution 3D skies with a variety of realistic atmospheric effects such as fog and haze.

### Adjustable Time of Day

Perform light and shadow studies with LumenRT's adjustable Sun, accurately set using NREL's solar positioning algorithms.

### Lens Flares

Anamorphic streaks and lens flares are fully adjustable for sun light and artificial lights.

### Depth of Field

Camera focal distance is fully adjustable to create eye pleasing depth of field effects.

### Custom Object Animation Paths

Animate characters, vehicles and animals with ease using the object animation path tool.

### Dynamic Terrain Response

Objects have intelligent terrain response so that they automatically reposition themselves as the terrain geometry changes.

### Open Sea Plane

An infinite ocean and sea plane can be added to the scene with adjustable agitation and speed properties.

### Night Skies and Moonlight

Easily switch from Night to Day with a single click. Enjoy moonlit skies with twinkling stars.

### Life



### Luminous Materials

Luminosity settings can be adjusted on all materials to give the appearance of light. Useful for objects such as TV screens. Fires and lit windows.

### People and Animals

Vast selection of animated characters and animals performing day to day activities help bring your scene to life.

**Indoor and Outdoor Objects** Choose from a large selection of common everyday objects such as light fixtures, furniture, fences, and background buildings to fill out your scenes.

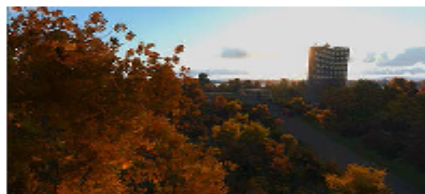
### Animated Vegetation

Through the use of Bentley Software's The Plant Factory, animated trees and shrubs responsive to wind and seasons are now available in LumenRT.

### Water Effects

Water materials with realistic caustics are available including lakes, ponds, and pools.

### Nature



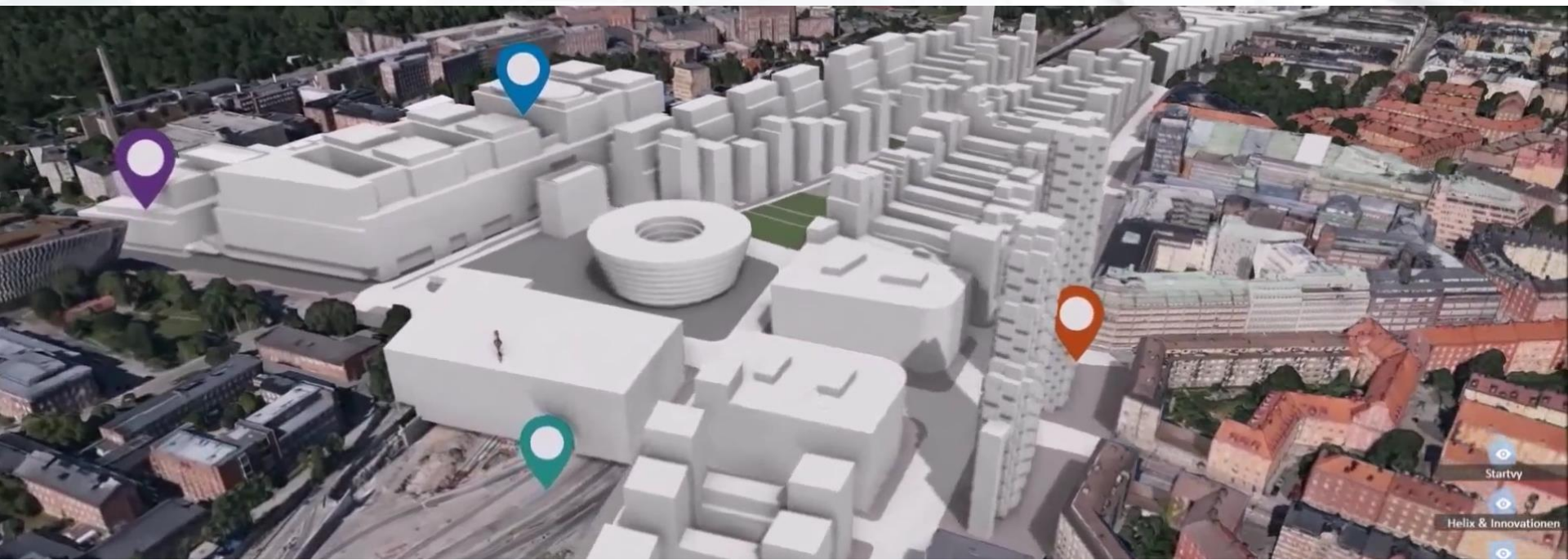
# ContextCapture

Kann die Erzeugung von **high-resolution, fully-3D-Darstellungen** von den digitalen Fotografien automatisieren

Aufgenommen mit jeder Kamera, sei es in einem **Smartphone** eingebettet



# ContextCapture| Conceptual Design Mit Reality





# ContextCapture | As-Built Structures Modeling



# ContextCapture | City Modeling

## Sakae district, Nagoya, Japan

**Dataset :** 552 210Mpix aerial vertical and oblique photographs

**Computation :** 20 hours on 3 computers

**Area :** 0.5 km<sup>2</sup>

**Resolution:** 5 cm / pixel

**Output:** 3D DSM



## Paris (subset), France

**Dataset :** 8000 aerial vertical (210Mpix) and oblique (80Mpix) photographs

**Computation :** 4 days on 10 computers

**Area :** 100 km<sup>2</sup>

**Resolution:** 7-8 cm / pixel

**Output:** 3D DSM



## Marseille, France

**Dataset :** 15470 aerial vertical (210Mpix) and oblique (80Mpix) photographs

**Computation :** 12 days on 10 computers

**Area :** 200 km<sup>2</sup>

**Resolution:** 5-7 cm / pixel

**Output:** 3D DSM





# ContextCapture – Produkt Informationen



## PRODUCT DATA SHEET



## ADVANCING REALITY MODELING WITH CONTEXTCAPTURE

Knowing the existing conditions of a project is a key asset in any decision process. Governments need to better know their territories, through mapping operations, infrastructure owners want to survey and inspect their assets, project delivery companies have to plan and monitor their actions and report to their customers. Being able to quickly reconstruct a 3D model accurately representing the existing conditions proves every day to be increasingly critical.



Much cheaper and more versatile than laser scanners or depth field cameras, ContextCapture automatically turns simple photos into accurate 3D models. Suited and optimized for surveying, mapping and inspection tasks at any scale, from objects to cities, and at any levels of detail, ContextCapture is the best-in-class solution for the reconstruction of existing conditions of infrastructure and assets.

## SOLUTION POSITIONING

### WHAT

Developed for 15 years at two major European research institutes, ContextCapture (formerly called Smart3DCapture) is a software solution for automatic high resolution 3D reconstruction from photographs, based on the highest-performance photogrammetry, computer vision and computational geometry algorithms. ContextCapture takes as input a series of digital photographs of a static scene acquired from distinct viewpoints, and automatically turns this dataset into a high resolution and textured manifold triangular mesh that can be exported in various 3D formats.

### FOR

#### MAPPING

- 3D Cities
- 3D Territories
- 3D Cadastre
- True orthophotos
- 2.5D DSM

#### SURVEYING

- Automatic modelling of existing conditions
- Volume measurement for excavation work

#### INSPECTION

- 3D Inspection of assets conditions
- Change detection on asset

## VALUE PROPOSITION

PHOTO  
BASED  
  
COST  
SAVINGS

No need for any expensive acquisition devices operated by trained users, any cameras suffice.

UNLIMITED  
SCALABILITY  
  
SUPERIOR  
PRECISION

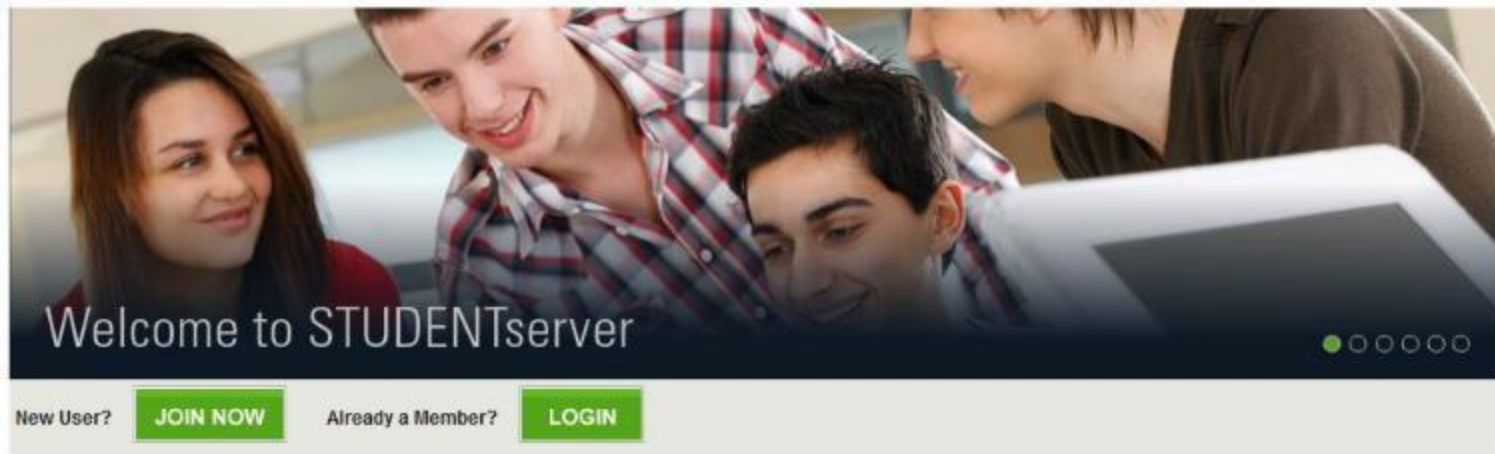
From simple objects to entire cities with the same solution. Renders the finest details thanks to a unique technology.

FULLY  
AUTOMATED  
  
TIME  
SAVINGS

No human intervention is required.



# STUDENTserver Startseite



## Step 1

### Download Software

Once you have joined the STUDENTserver, first order of business is downloading and installing one or more of the many Bentley software products relevant to your studies. Be sure to check for the vital Site Activation Code required to register the software as part of the installation process.



## Step 3

### Review Transcript

Bentley records each student's completion of onDemand training in their personal Bentley Professional Training Transcript. It is available for review at any time and can be forwarded by Bentley to potential employers for both internships and full employment. It may take up to 24 hours for a completed course to appear in your transcript.



## Step 2

### Take Online Training

To learn how to use Bentley software, be sure to check out the online training. You will find a wide range of topics from how to use your new software to advanced subjects taught by experts in the field. To get started a list of recommended introductory courses are available on the eLearning page.



## Step 4

### Visit Be Communities

Through the Be Communities, Bentley provides access to a wealth of information including discussion forums, wikis, blogs, about all Bentley products as well as design/engineering discipline specific communities where students and faculty can network with working professionals and Bentley colleagues.



## News feeds

Congratulations to the Academy of Mining and Metallurgical Engineering in Krakow, Poland. 2014 Student Design Award Winners


Congratulations to the University of Auckland, New Zealand. 2014 Student Design Award Winners

Award ceremony at Eastern Technical High School: 2014 Bentley Student Design Competition

2014 National Student Steel Bridge Competition Winners

Congratulations to the 2014 Student Design Competition Winners!

# Registrieren für den STUDENTserver



## Create your Profile

Access the most relevant information based on your role.

**School Code**

**Work email**

**First name** **Last name**

☐ Yes, please send me emails about Bentley software and solutions, services and events.

☐ I agree that I have read and accept the [Terms of Use And Privacy Policy](#).

**Submit**

Unique code for School



# STUDENTserver: Download Software

[Home](#) » [Download](#)

[Download](#)

[Learning](#)

[Review Transcript](#)

Download Queue: (0 items)

## Download Software

YOU NEED THIS KEY TO ACTIVATE YOUR SOFTWARE

Site Activation Key:

E0B78E95ABA9A9F19347A4BADB26C44D

[How do I activate my Bentley Software?](#)

### Product Category

- MicroStation
  - [Bridge Design and Engineering](#)
  - [Building Analysis and Design](#)
  - [Building Performance](#)
  - [Construction](#)
  - [Electrical and Instrumentation](#)
  - [Geospatial Platform](#)
  - [Geotechnical](#)
  - [Hydraulics and Hydrology](#)
  - [Imaging and Point Clouds](#)
  - [Offshore Structural Analysis](#)
  - [Pipe Stress Analysis](#)
  - [Plant Design and Analysis](#)
  - [Plant Design and Engineering](#)
  - [Platform Technology](#)
  - [ProjectWise](#)
  - [Rail Design](#)
  - [Road and Site Design](#)
  - [Structural Analysis and Design](#)
  - [Structural Drafting and Detailing](#)

		Product Name	Version #	Date	File Size
▶	<input type="checkbox"/>				
▶	<input type="checkbox"/>	<a href="#">GenerativeComponents Extension V8i</a>	08.11.08.296	5/1/2012	80 MB
	<input type="checkbox"/>	<a href="#">MicroStation V8i</a>	08.11.09.459	6/27/2013	826 MB
	<input type="checkbox"/>	<a href="#">MicroStation PowerDraft V8i</a>	08.11.09.459	6/27/2013	693 MB
▶	<input type="checkbox"/>	<a href="#">MicroStation V8i SDK</a>	08.11.09.460	7/12/2013	66 MB

UPDATE DOWNLOAD QUEUE

© Bentley Systems, Incorporated

[Facebook](#)

[Twitter](#)

[YouTube](#)

[Contact Us](#)

[Privacy Policy](#)

[Terms of Use](#)

# STUDENTserver: On-Demand Learning

[Home](#) » [Learning](#)

[Download](#)

**Learning**

[Review Transcript](#) 



Download Queue: (0 items)

## Recommended OnDemand eLearning

This page provides access to recommended onDemand eLearning courses appropriate for the first time user. Click on a Product Category to review a list of links to this introductory training by product name. Click on a product of interest for a list of one or more courses you can immediately register for and begin taking. For a more detailed review of all of the onDemand eLearning training at your disposal try the Learning Paths or Search links.



Watch a one minute video overview of the OnDemand eLearning process

### Product Category

- [MicroStation](#)
- [Bridge Design and Engineering](#)
- [Building Analysis and Design](#)
- [Building Performance](#)
- [Construction](#)
- [Electrical and Instrumentation](#)
- [Geospatial Platform](#)
- [Geotechnical](#)
- [Hydraulics and Hydrology](#)**
- [Imaging and Point Clouds](#)
- [Offshore Structural Analysis](#)
- [Pipe Stress Analysis](#)
- [Plant Design and Analysis](#)
- [Plant Design and Engineering](#)
- [Platform Technology](#)
- [ProjectWise](#)
- [Rail Design](#)
- [Road and Site Design](#)
- [Structural Analysis and Design](#)
- [Structural Drafting and Detailing](#)

### Product Name

- [Bentley CivilStorm](#)
- [Bentley HAMMER](#)
- [Bentley PondPack](#)
- [Bentley SewerCAD](#)
- [Bentley SewerGEMS](#)
- [Bentley StormCAD](#)
- [Bentley WaterCAD](#)
- [Bentley WaterGEMS](#)
- [Bentley CulvertMaster](#)
- [Bentley FlowMaster](#)

### Quick Links

[My Registered Training](#)



# STUDENT Server: Lehrabschriften und Zertifikate

## Transcript for Laura Meier

Every course you complete is recorded to your online transcript. Use it to track your professional growth over time, print Certificates of Completion, and self-report your learning efforts to maintain your credentials.

[Email Transcript](#)[Print Transcript](#)

<input checked="" type="checkbox"/>	Course	Delivery Type	BI	Completion Date(s)	
<input checked="" type="checkbox"/>	Creating a New Floor Plan and Referencing the Column Grid V8i   en   SELECTseries 3	OnDemand	1	Nov 4, 2013	
<input checked="" type="checkbox"/>	Drawing Exterior Walls V8i   en   SELECTseries 3	OnDemand	1	Nov 4, 2013	
<input checked="" type="checkbox"/>	Facilities Solids Modeling V8i   en   SELECTseries 3, SELECTseries 4	OnDemand	1	Nov 2, 2012	
<input checked="" type="checkbox"/>	Simple Steel Frame Structural Design V8i   en   SELECTseries 3, SELECTseries 4				
<input checked="" type="checkbox"/>	The Interface V8i   en   SELECTseries 3, SELECTseries 4				

10 items per page

### Accreditation Legend

+ BI = Bentley Institute

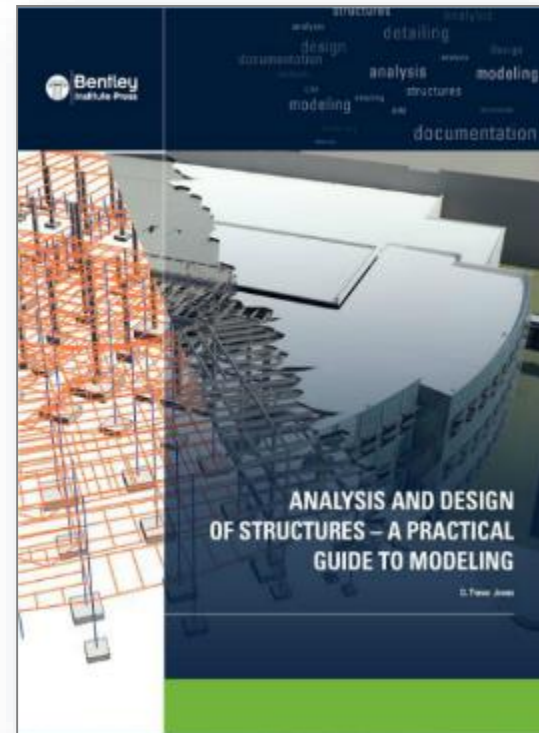
[Problem with your transcript?](#)

# Nachschlagewerke



**Bentley**  
Institute Press

Presse von Bentley Institute ist ein Kenntnis-Führer in der Bekanntmachung (Veröffentlichung) von avantgardistischen Universitätslehrbüchern und Berufsbezugsarbeiten engagiert zu den Bedürfnissen nach architektonisch, Technik, Aufbau, Geospatial, und pädagogischen Gemeinschaften



[www.bentley.com/books](http://www.bentley.com/books)




# Sociale Media-Kanalen





Folgen Sie uns auf Social Media!




# Bentley communities



Enter a few words that describe what you are looking for






**Bentley Academic Programs**

+ New

Support Solutions Forum Blog Files Sub-Communities Tags

## Tue, Jul 14 2015



**kannan as** in Bentley Academic Programs  
[Run FPSO InPlace analysis in Sacs 5.5](#)  
I am having Sacsinp file and Tow file. I want to run the inplace analysis for FPSO module. With this i can run or I need combine input file to run the full analysis. In Sacsinp file option they have not checked to combine loads into basic case.  

This helped me 7 days ago More



This is where you can find and contribute to discussions, ideas, and other information about Bentley's Academic programs.

Email digest options


## Most Active Members

FROM 2015-6-21

TO 2015-7-21




## Wed, May 27 2015



**Laura Meier** in Bentley Academic Programs  
[2015 National Student Steel Bridge Competition Winners](#)  
On May 22-23, University of Missouri, Kansas City acted as host for the 2015 ASCE/AISC National Student Steel Bridge Competition. The competition aims to reinforce engineering education via a comprehensive, real-world student project that runs from structural design through fabrication, construction planning, and testing. Teamwork and project management are key to success in this intercollegiate competition, to produce a scale model tha...  

This helped me Comment 1 month ago More


## Wed, Apr 22 2015



**Laura Meier** in Bentley Academic Programs  
[Software Download Improvements in STUDENTserver!](#)  
We are pleased to announce a new and improved software download section in STUDENTserver , based upon the needs of our Academic SELECT subscribers! You can now filter the comprehensive academic subscription's software suite based upon: Product Line (e.g. Hydraulics and Hydrology), Brand (e.g. STAAD.Pro), Generation (version), Language (German, French, Spanish, etc.), and more! Watch this short video about how to get started with ST...  

This helped me Comment 2 months ago More

32 | WWW.BENTLEY.COM | © 2012 Bentley Systems, Incorporated



**Bentley**  
Sustaining Infrastructure





KEEP  
CALM  
AND BE A  
STUDENT  
AMBASSADOR

# Bentley Student Ambassador Program

*Students CONNECTing Students*

# Connecting & Empowering Students

- Bentley Student Ambassadors sind die Go-to Personen - eine Verbindung zwischen Bentley und ihre Campus
- Leaders und Social-Gurus, die leidenschaftlich über Technologie sind, genieße den Austausch von Kenntniss, die auch helfen, für ihre Karriere
- Ein weltweites Netzwerk von Studenten mit den Austausch von Ideen, Informationen, Erfahrungen und Aufregung





# Rolle und Verantwortlichkeiten

---

- Verbreiten das Wort über STUDENTserver
- Entwickeln von einen Aktionsplan, für die Schule
- Arbeiten mit dem Academic Team, um Aktivitäten auf dem Campus zu organisieren
- Teilen Sie zeitnahe Updates und Angebote mit Professoren
- Erleichtern von die Kommunikation der Bedürfnisse und Möglichkeiten

# Vorteile

- Möglichkeit um bei potenzielle Arbeitgeber vorgestellt zu werden
- Wettbewerbsvorteil auf dem Arbeitsmarkt, über einen Brief von Bentley
- Erhöhte Status auf dem Campus
- Globale networking Möglichkeiten
- zusätzlich Zugang zu Bentley-hosted events
- Sneak previews





# Contact Informationen

---

Weitere Informationen über Bentley Akademische Programme finden Sie unter:

<http://www.bentley.com/Academic>

Oder per E Mail :

**Michael.Corteyn@Bentley.com**



**Danke!**